

# MPDES SWPPP Administrator & SWPPP Preparer Certification

April 26–27, 2021

\$380/person

435 Ryman ST. Missoula, MT 59802



**Two day certification course for contractors, engineers, consultants, municipal staff, and those wanting to learn more about erosion control BMPs.**

- Learn the MPDES permit requirements for construction activity
- Learn new techniques and BMPs
- Get hands on experience with BMPs in the field

**Course will also be held In-Person & Virtually via ZOOM**  
With DEQ approval, the classroom portion will be in person & Virtually, for safety reasons during the pandemic. Everyone Can participate in the field portion together or we have a virtual option available. Contact us below for more discussion on how to take advantage of this opportunity.

**There are three training opportunities with this course**

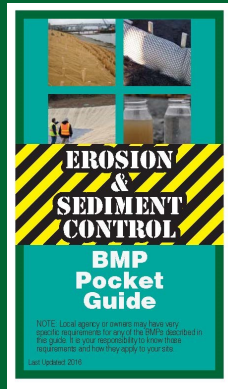
- Become MPDES SWPPP Administrator/Preparer certified for the first time
- Recertify as a MPDES SWPPP Administrator/Preparer
- Attend the BMP workshop

**Contact: [JenL@CleanWaterATS.com](mailto:JenL@CleanWaterATS.com) or (509) 947-6583**

PDH Available

14 for full cert  
8 for recert

Contact us  
today to  
make  
arrangements  
for this  
unique  
opportunity!



In addition to the  
wallet sized  
certification card,  
students will receive  
a waterproof Pocket  
Guide as a resource  
for future projects!

## Day 1: April 26, Classroom: 8am–5pm

- In-Person – 435 Ryman ST. Missoula, MT 59802
- Virtual – Zoom Call

## Day 2: April 27, Classroom/Field: 8am–3pm

Everyone will meet in the field with social distancing practiced. Depending on number of students, multiple field course may be conducted.

Field BMP Workshop conducted simultaneously!

We will need your name, address, phone and email to complete the registration. **Registration fees are not refundable two weeks prior to date of course if minimum attendance is achieved.**

*If you need recertification or just want to attend the Field BMP Workshop portion of the course contact us*



## Get hands-on BMP experience!

CWT

For more information on classes or  
BMP Pocket Guide,  
Contact Jennifer Lee, at  
[JenL@CleanWaterATS.com](mailto:JenL@CleanWaterATS.com) or (509) 947-6583